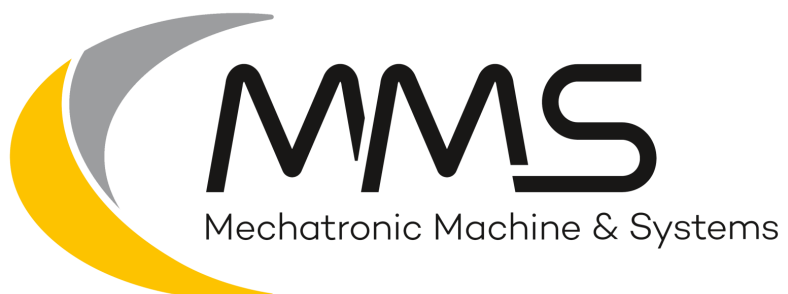


MMS Srl
Via Guglielmo Marconi 38
27010 Vellezzo Bellini (PV)

+39 0382 1571022



AIR CONTAINERS

Handling



Specialists in designing and producing **systems for internal handling**

CAT. B REV 01 2018 **JANUARY 2022**



4. Presentation

5. Mission and values

6. Our reality

7. Why MMS?

8. What we do

10. After sales service & spare parts

12. Types of container

16. Safety

17. Our solutions

18. Castordeck

19. Other Castordeck models

20. Castordeck accessories

22. Weighing platform

23. Rollerdeck platform

24. Lifting platform

25. Conveyor for containers

26. Slides/Chutes

Retro. Contact us

Letter of presentation

MMS Srl

Via Guglielmo Marconi 38
27010 Vellezzo Bellini (PV)
+39 0382 1571022

MMS: we are constantly committed to supporting our customers by providing the best solutions for their needs.

We follow step by step our customers during the choice and the design and manufacture of standard machinery or special ones for internal handling, with the same passion that distinguishes us from more than twenty years in the field of industrial automation.

Our transport systems have been designed with a great attention to details: we guarantee the best movement of goods thanks to robust and reliable conveyors.

But we do not make only belts: we guarantee a complete offer and quality thanks to our line of accessories, such as cabinets, shelves, workbenches, platforms, and the line of machines for the automatic sorting
We are sure of being able to automate at best, the internal handling of your company.

Best regards



Mission and Values

We follow our customers toward the best solution, guiding them *step by step* during the design process and sale and we guarantee the highest quality-price rate, evaluating materials and components of our products.

We are committed to transparency and to create strong relationships with the network of people who are already in contact with our team or all the new customers to be.

We do our best to keep this promise on a daily basis, both using scheduled maintenance contracts managed by our service department and ensuring maximum availability in the course of the design.

We fully concentrate on the requests that we receive from the market. We constantly update and improve our ideas to give the best machinery for this fast moving market.



OUR REALITY

Our team is formed by staff with over twenty years of experience in the field and an important know-how acquired in the design and production of systems for internal handling, including special machines, plants for logistics, plants for courier and production lines.

MMS in addition to offer service of project engineering, helps to choose the best system to suit your needs at the best price.



VISIT OUR WEBSITE AND REQUEST YOUR QUOTE!

WHY MMS?

*M*_{echatronic}

It is the word which you hear more and more about, it is the association of two names: mechanical engineering and electronics engineering.

With the development of systems and solutions ever more advanced, it is indispensable to have trained technicians who know how to manage the progress of a new project using the best technologies available on the market. This is what we are doing with our internal and external collaborator: create a high working team level.

*M*_{achine}

The machine is the product that we are designing and proposing on the market as a single element of a more complex composition; a composition made of more "bricks" that, interconnected, they allow productivity in any kind of plants (from the simple to complex).

Every machine is designed with systems of CAD 3D (three-dimensional) and parameterised in order to be able to be replicated on a large scale, even with design differences (product data management).

Thanks to a developed throughout the years, PDM software we interconnected the management of the technical office with the management of the warehouse. This investment has allowed us to always have under control the state of progress of the orders, purchases of components, the warehouse and the service. We can use this software to understand the state of production of our company.

*S*_{ystems}

Systems, the ability to produce machines interconnected both from the point of view of the machine but especially for the components that must be managed through a software PLC.

WHAT WE DO

Projects Portfolio







AFTER SALES SERVICE AND SPARE PARTS



Distribution of our technical experts



The Service Team of MMS is formed by expert personnel, qualified and motivated.

Spare parts are always available, the operating reliability and completeness of the instructions, gives the right confidence to our customers about our reliability and efficiency.

We are proposing preventative maintenance contracts, calibrated on the needs and specific applications for the verification of the status of system service.

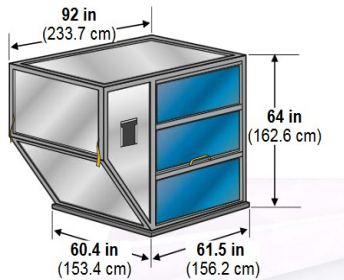
MMS offers also the possibility to its customers to receive technical support from product design to the period post-sale. For this reason our service department is able to conclude contracts for maintenance and scheduled service that can respond to better meet your needs.

During 2018 we have consolidated agreements with dealers located on Italian territory.

With our direction and management we can manage contacts of service for our customers with interventions within 24/48 hours.

TYPES OF CONTAINERS

MMS is able to propose solutions for the handling of the following types of containers. This guide for the transport of ULD Unit Load Device has been developed thanks to the material provided by IATA, International Air Transport Association, and ATA, Air Transport Association of America



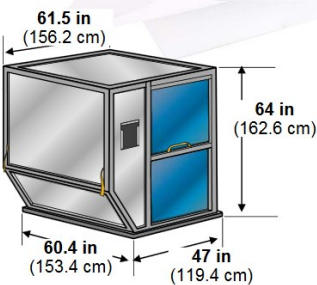
LD-1

Known as: AVC,AVD,AVK,AVJ

IATA ULD Code: AMC Contoured Container

Internal Volume: 4.8. cu. m (169.5 cu. ft)

Max gross weight: 1588kg (3501 lb)



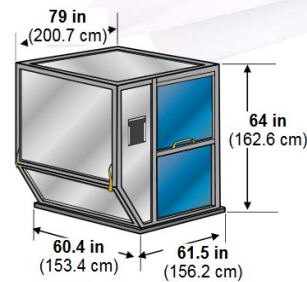
LD-2

Known as: APA, DPA

IATA ULD Code: DPE Contoured Container

Internal Volume: 3.4. cu. m (120 cu. ft)

Max gross weight: 1225kg (2700 lb)



LD-3

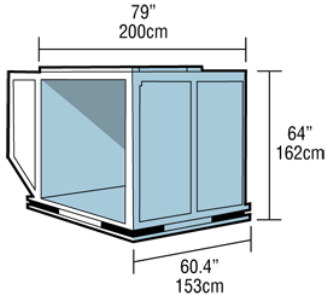
Known as:

AKE,AVA,AVB,AVC,AVK,DVA,DVE,DVP,XKS,XKG

IATA ULD Code: AKE Contoured Container

Internal Volume: 4.3. cu. m(152 cu. ft)

Max gross weight: 1588kg (3500 lb)



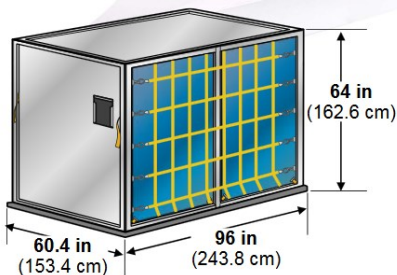
LD-3 ISOLATO

IATA ULD Code: RKN

Internal Volume: 3.0. cu. m(109 cu. ft)

Max gross weight: 1588kg (3500 lb)

Temperature control range: DA -20° A +20°



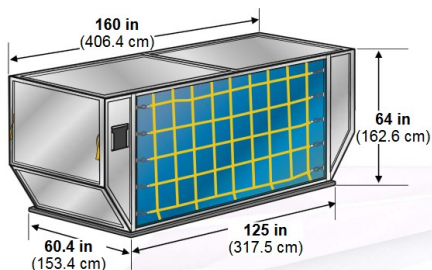
LD-4

Known as: ALD, AWD, AWZ, DLP

IATA ULD Code: ALP Rectangular Container

Internal Volume: 5.7. cu. m (201 cu. ft)

Max gross weight: 2439kg (5399 lb)



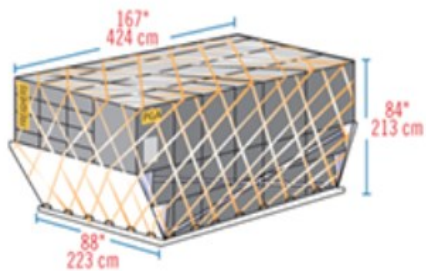
LD-6

Known as: AWD, AWF

IATA ULD Code: ALF Contoured Container

Internal volume: 8.9 cu. m (169.5 cu. ft)

Max gross weight: 3175kg (7000 lb)

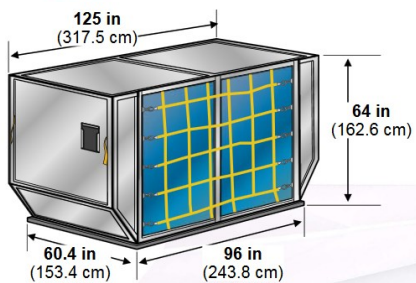


LD-7

IATA ULD Code: XAW P1P Pallet with fixed angle wings and net

Internal volume with excess: 14.0 cu. m (494 cu. ft)

Max gross weight: 5000kg (11023 lb)



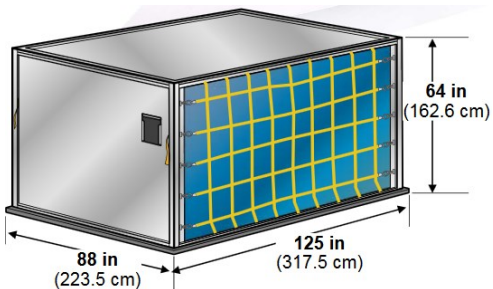
LD-8

Known as: ALE, ALN, DLE, DLF, DQP, MQP

IATA ULD Code: DQF

Internal volume: 6.85 cu. m (242 cu. ft)

Max gross weight: 2450 kg (5401 lb)



LD-9

Known as: AA2, XAG, XAV

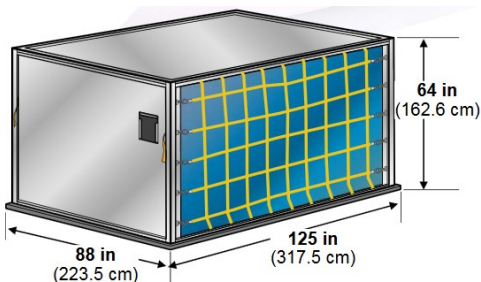
IATA ULD Code: AAP Enclosed Pallet on P1P base

Internal volume: 9.1 cu. m (321 cu. ft)

Max gross weight:

4624 kg (10194 lb)

6000 kg (13227 lb)



LD-11

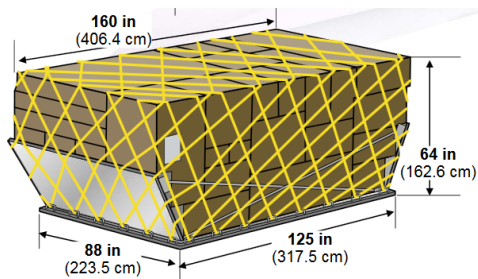
Known as: AA2, XAG, XAV

IATA ULD Code: ALP Rectangular Container

Internal volume: 7.2 cu. m (253 cu. ft)

Max gross weight:

3176 kg (7002 lb)



88" PALLET

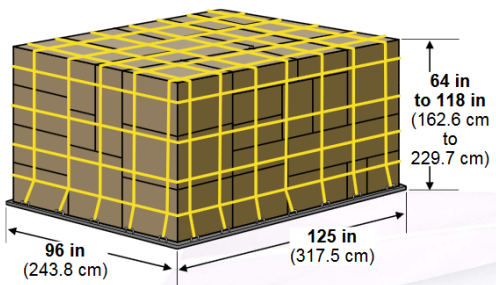
IATA ULD Code: P1P

Maximum volume: 11.9 cu. m. (420 cu. ft)

Max gross weight: 747/DC-10: 6033 kg (13300 lb)

767:5103 kg (11227 lb)

777/DC-10:4626 kg (10501 lb)



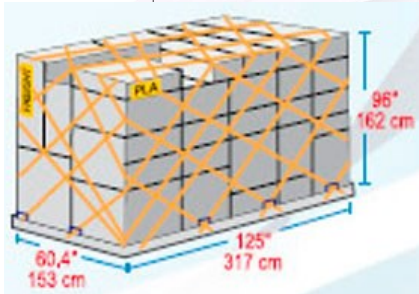
96" PALLET

Known as: P6A, P6C, P6Q, PMA, PMC, PMP, PQP

IATA ULD Code: P6P 10 ft flat pallet with net

Maximum volume: 21.2 cu. m. (747 cu. ft)

Max gross weight: 6,804 kg (15000 lb)



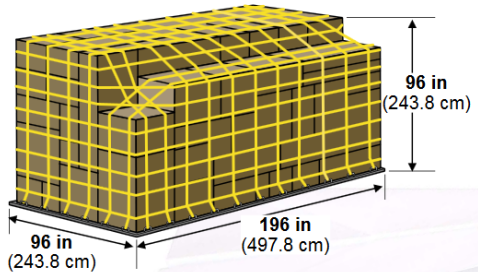
HALF PALLET

Known as: PLB, FLA, P9A, P9B, P9P, P9R, P9S

IATA ULD Code: PLA Half pallet with net

Maximum volume: 7.2 cu. m (254 cu. ft)

Peso lordo max: 3175 kg (6999 lb)



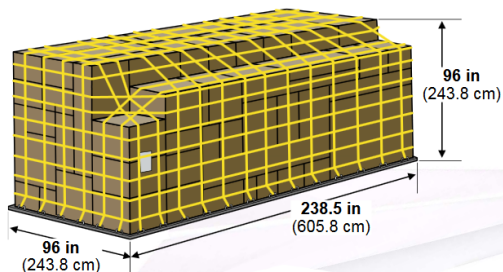
16 FT PALLET

Known as: PMA, P4A, P4M, PZA

IATA ULD Code: PRA 16FT Flat Pallet with net

Maximum volume: 26.8. cu. m (946 cu. ft)

Peso lordo max: 11300 kg (24991 lb)



20 FT PALLET

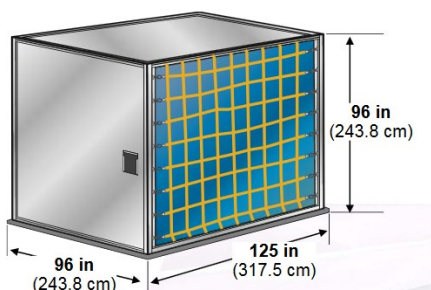
Known as: PGA, PGE, PGF, PSA, PSG, P7A, P7E, P7F, P7G

IATA ULD Code: PGA 20FT Flat Pallet with net

Maximum volume: 33.2. cu. m (1174 cu. ft)

Peso lordo max: 11340 kg (25000 lb)

TIPOLOGIE DI CONTAINER



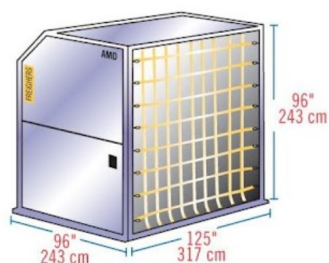
AQ6

Known as: AMF, AMG, AMK, AMP, AQA, AQD, AQD, AQ6

IATA ULD Code: AMA Rectangular Container on P6P Base

Internal volume: 17.5 cu. m (618 cu. ft)

Peso lordo max: 6804kg (15000 lb)



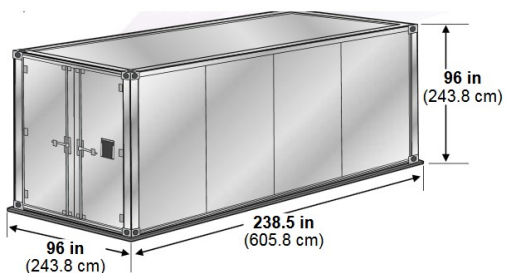
AQ7

Known as: AQA, AQ7

IATA ULD Code: AMD Contoured Container on P6P Base

Internal volume: 19.9 cu. m (702 cu. ft)

Peso lordo max: 6800kg (14991 lb)



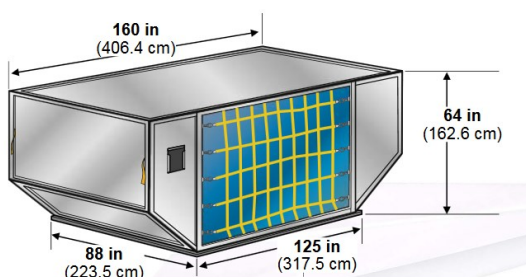
M-6

Known as: ASE

IATA ULD Code: AGA 20FT BOX CONTAINER

Internal volume: 33.0 cu. m (1165 cu. ft)

Peso lordo max: 11340kg (25000 lb)



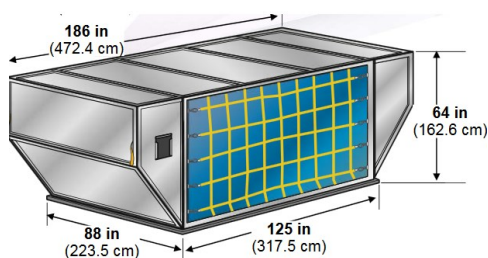
LD-26

IATA ULD Code: AAF

Max gross weight:

747/DC-10: 6033 kg (10194 lb)

777/DC-10: 4626 kg (13227 lb)



LD-29

IATA ULD Code: AAU Contoured Container on P1P base

Internal volume: 14.2 cu. m (501 cu. ft)

Max gross weight: 6033 kg (13300 lb)

SAFETY

All our products are CE certified and are supplied complete with:

- ◆ Safeties
- ◆ User Manuals
- ◆ Maintenance

They are also all tested before being shipped. We guarantee certified products, warranty and technical assistance.

CE REGULATIONS FOR HAND CARRIAGE OF PACKAGES

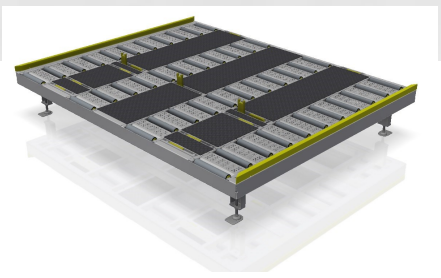
Directive 2006/42/EC of 17 May 2006 lays down the essential requirements regarding safety and public health to which must match the machines, on the occasion of their design, manufacture and of their operation before placing them on the market.



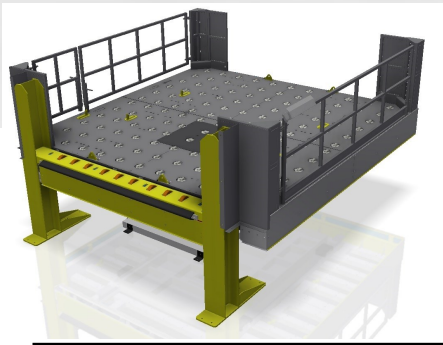


OUR SOLUTIONS

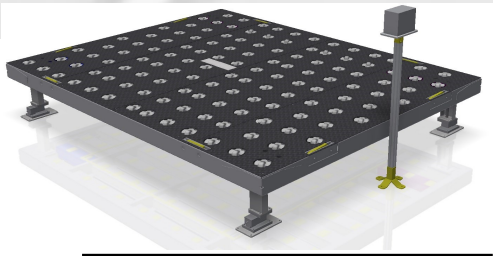
FOR AIR CONTAINERS HANDLING



Handling



Lifting



Weighing



Footboard



Guard rail

CASTORDECK PLATFORM

Handling

Main features

Made of sturdy welded carpentry with holes for the wheels.

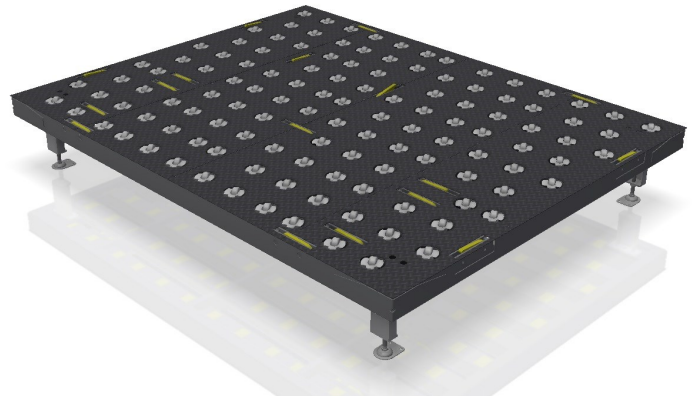
Each module is provided with holes for side connection and fastening system to the floor.

It can be fixed directly to the floor with the share min=105 or with axle stands at an altitude of H=508.

Standard treatment: Painting on request: hot galvanizing coating for outdoor installation.

Wheels : Ø70mm nylon fixed on rotatable support having a flange with 2 fixing holes Ø11mm.

Wheels easily removable for maintenance.



Technical Data

Size: 2400 x 1050x113h
N°supporting wheels: 21
Flow Rate (per wheel): 200kg
ambient temperature: from 5°C to 40°C

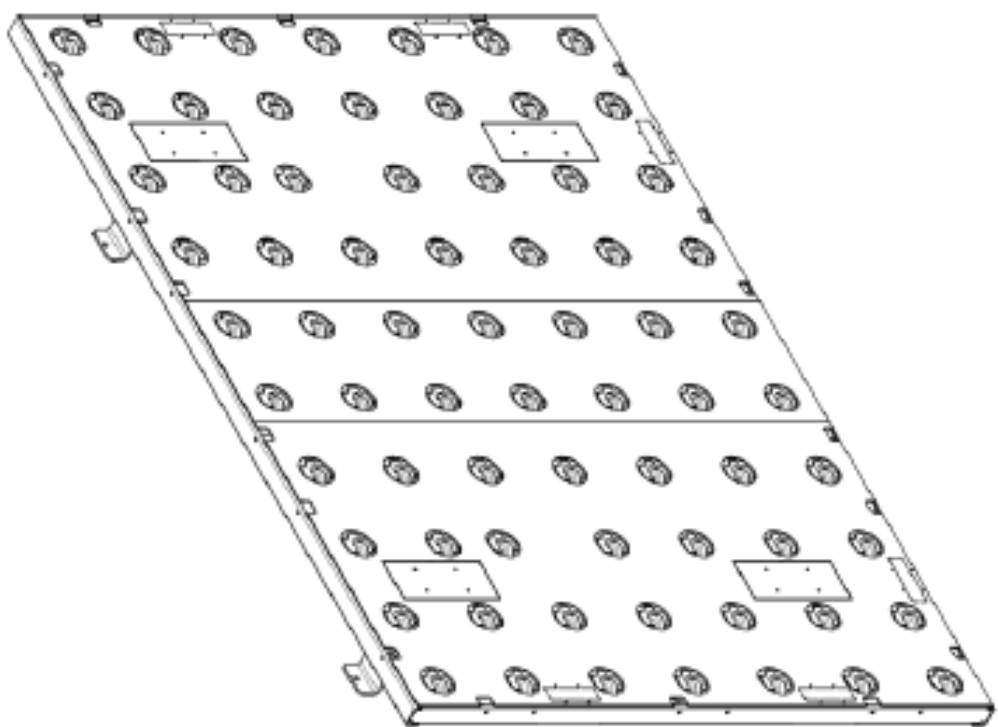
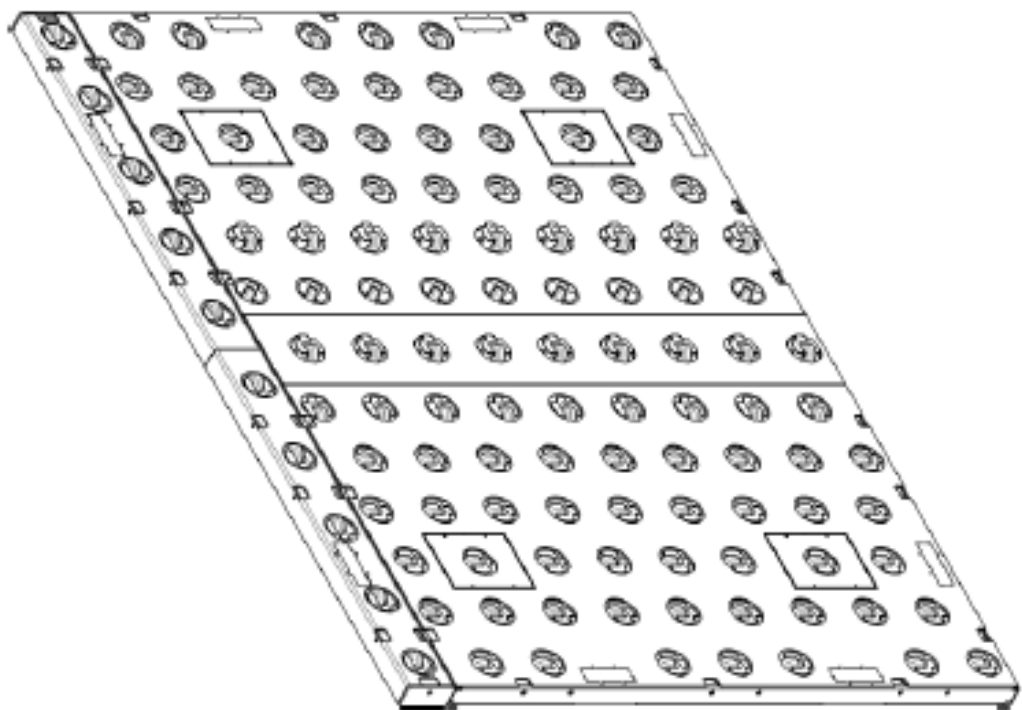
STANDARD UNIT:

- ♦ Length : 3300 mm
- ♦ width: 2500 mm
- ♦ Height from the ground :130 mm or 500 mm
- ♦ Capacity: 3000 kg/mq

ACCESSORIZES

- ♦ 4 loading cells, 4400 kg each
- ♦ Validation of the weight through the display in kg or lbs
- ♦ Access ladder
- ♦ Guard rail
- ♦ Lateral support
- ♦ Central support
- ♦ Crash Barrier

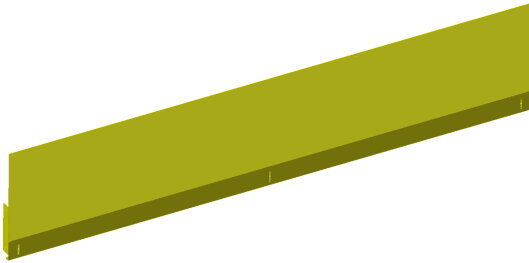
OTHER CASTORDECK MODELS



CASTORDECK

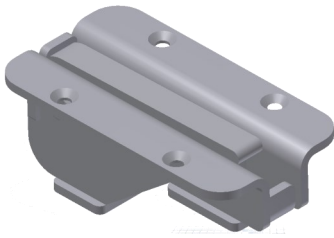
CASTORDECK ACCESSORIES

Adjustable tailgate



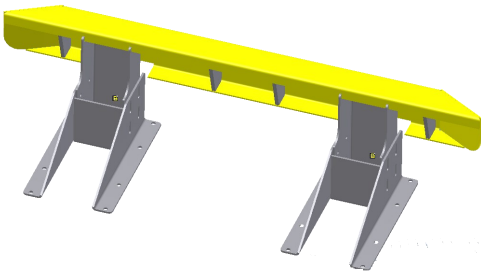
Carpentry in painted steel
Adjustable tailgate for Castordeck Platform
Weight: 29,15 Kg
Code: G10073003902X

Retractable stop



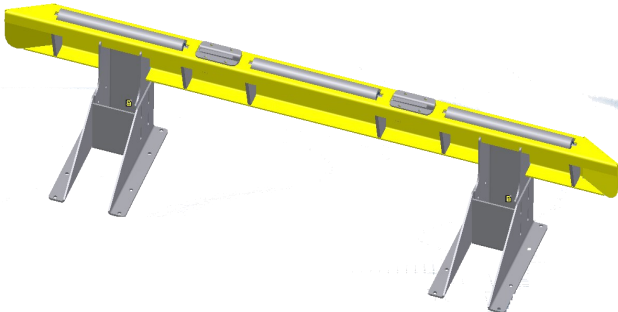
Carpentry in painted steel
Used as stop of air containers on CASTODERCK platforms
Fixing n.4 screws T.S.M8
Weight: 6 Kg
Code: G10071000205X

Guard rail H508 x L2000



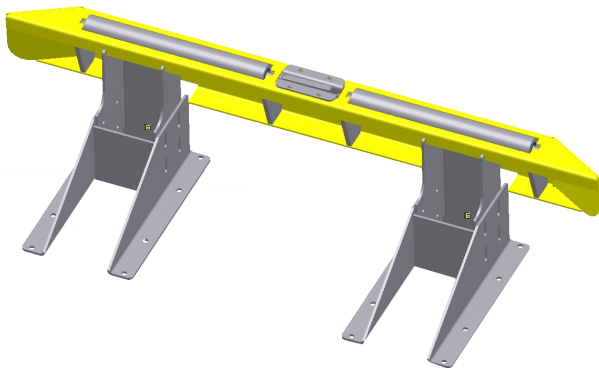
Carpentry in painted steel
Guard rail for Castordeck platform with rollers clips
Height 508mm
Width 2000mm
Weight 104.22 Kg
Code: G10073003904X

Guard rail H508 x L3000



Carpentry in painted steel
Guard rail for Castordeck platform with rollers clips
Height 508mm
Width 3000mm
Weight 136.85 Kg
Code: G10073003902X

Guard rail H508 x L2000



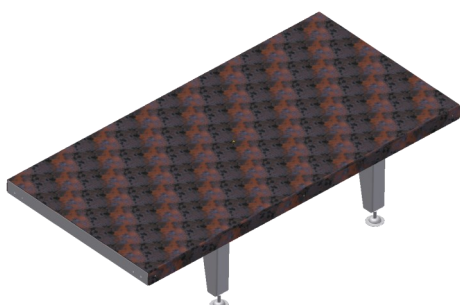
Carpentry in painted steel
Guard rail for Castordeck platform with rollers clips
Height 508mm
Width 2000mm
Weight 84.93 Kg
Code: G10073003906X

OTHER ACCESSORIES



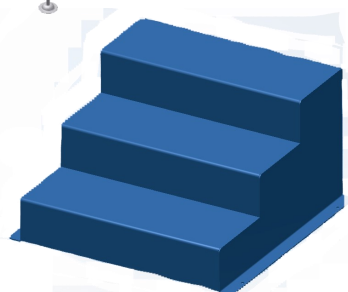
Opened gridded platform

Carpentry in painted steel
Height: 508mm with levelling feet ± 40 mm
Grilled in galvanized sheet metal or used as working surface for the operators
Capacity: 400 Kg/l
Weight: 369.68 Kg
Codice: G90010100804X



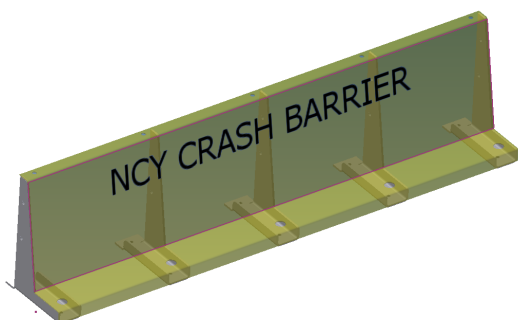
Operator's platform

Carpentry in painted steel
The shelf of the walkway is made of embossed sheet metal 3+2
Measurements 2422 x 1200 x 560mm
Temperature $+5^{\circ}$ / $+40^{\circ}$
Weight 141.44 Kg
Codice: G90010100702X



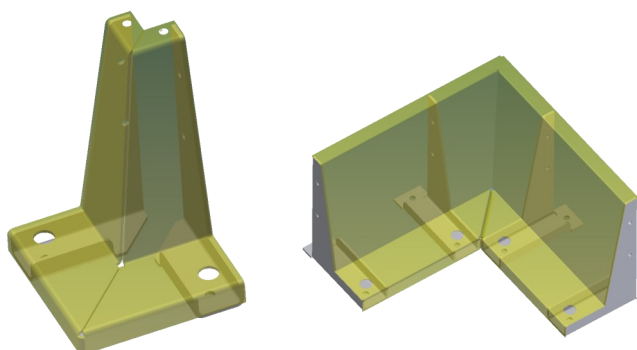
Steps for Operators

Carpentry in painted steel
Width : 800mm
Used to step on to the platform
Height 508mm
Weight 53.35 Kg
Code: G10073003612X



Crash barrier

Carpentry in painted steel
Width 2000mm
Height 486mm
Splay 4mm
Weight 69.1 Kg
Code: D92030600030X



Optional

- Crash barrier—External Angle
- Crash barrier—Internal Terminal

Weighing Platform

Major features

Frame made of heavy carpentry, electrically welded steel

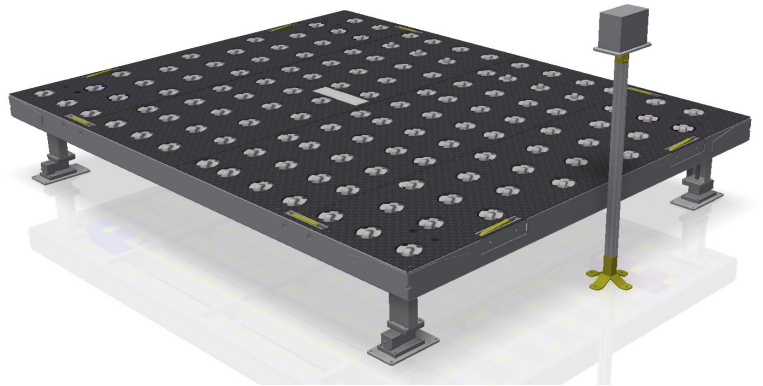
upper floor in a ribbed sheet metal with holes for wheels

Load cells dimensioned for weighing up to 7000 kg

Surface treatment with epoxy powder

On request: Hot Dip Galvanizing

used for the weighing of Air containers in input and/or output



Technical Data

- ◆ **Capacity:** 8000kg
- ◆ **Environmental temperature:** -5° a 40°
- ◆ **Total weight:** 1000kg
- ◆ **Power supply :** 230V - 50Hz
- ◆ **N°4 loading cells** 4400 kg each
- ◆ Validation of the weight through the display in kg or lbs
- ◆ **STANDARD module:**
- ◆ Length: 3300 mm
- ◆ Width: 2500 mm
- ◆ Height min.: 120 mm

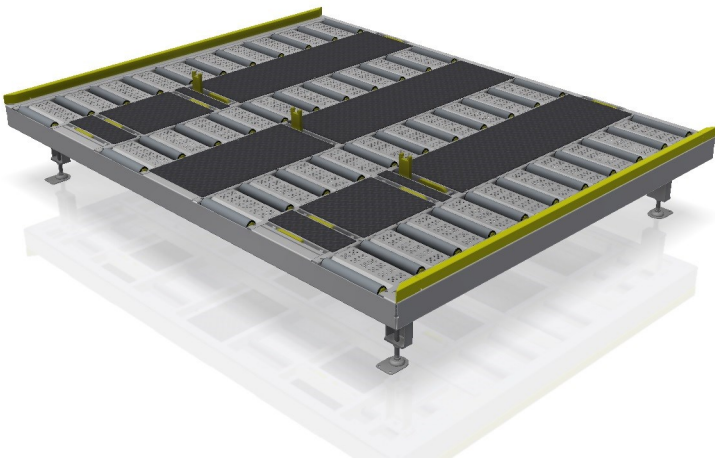


Display features

- ◆ Tare memory
- ◆ Stain less steel housing IP65
- ◆ Measurements : 17,8 x 15,9 x 6,6 cm
- ◆ COM1: Serial port RS232
- ◆ 1 Input / 3 Output

ROLLERDECK PLATFORM

Major features



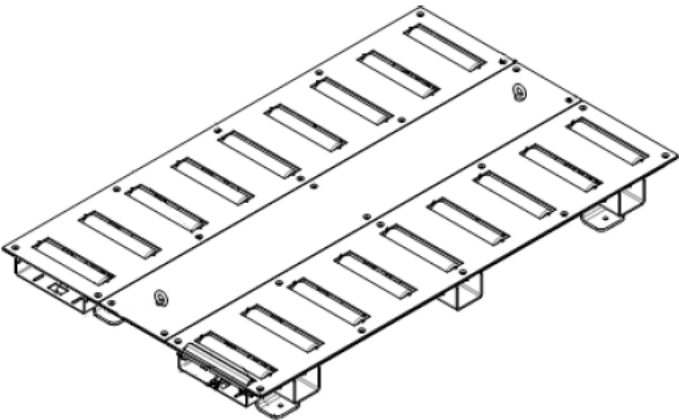
Platform in integrated steel with idle rollers and Sideboards

Rectilinear movement or storage without rotation or lateral translation of the container.

Perfect for the parking of ULD during loading and unloading phases.

Technical Data

- ◆ Supporting frame in a ribbed sheet 5mm thickness with inserted rollers Ø 60mm, flow rate 150kg each.
- ◆ **Flow rate at full load:** 6000 kg
- ◆ **Height:** 508 mm (min. 150 mm)
- ◆ **Surface finish:** hot dip galvanizing or powder coating



ROLLERDECK

LIFTING PLATFORM

Major features

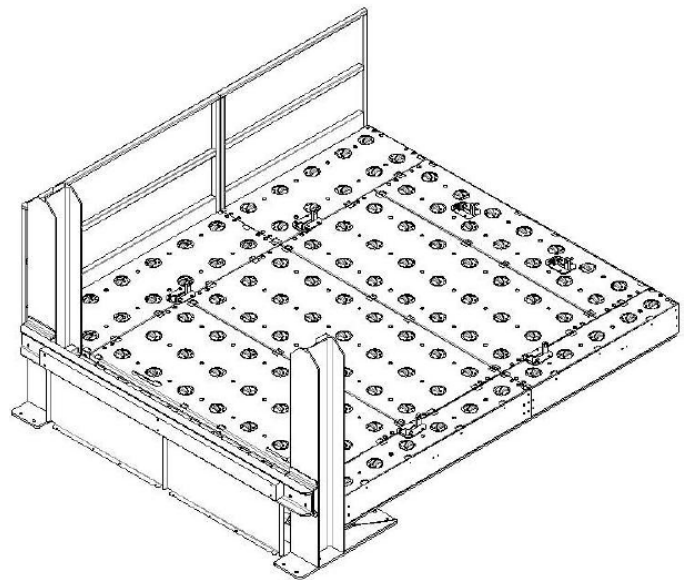
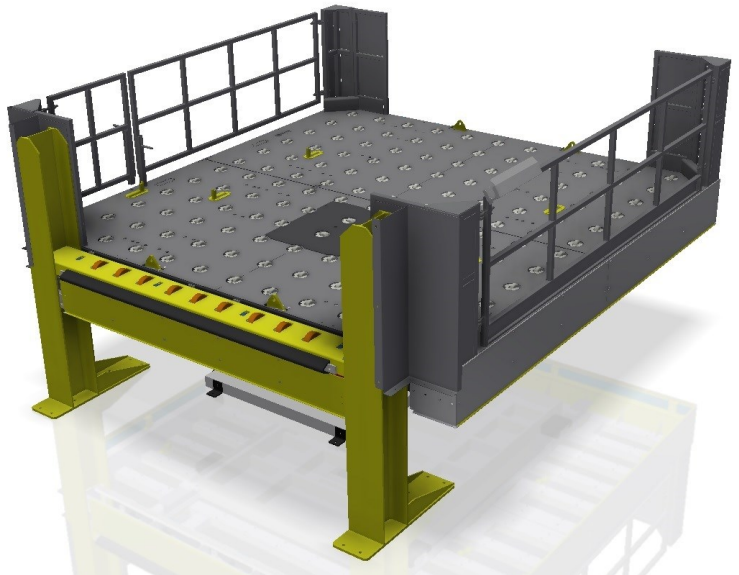
Hydraulic platform with pantograph mechanism integrated with standard Castordeck modules for vertical handling, outbound and inbound.

A second hydraulic controller to avoid the machine stops with a problem

Technical Data

- ♦ Supporting frame in a ribbed sheet (thickness 5mm) Maximum stiffness of the structure
 - ♦ Full load capacity 7000 kg
 - ♦ Height min.: 500mm
 - ♦ Measurements: 3300 x 3625 x 765 mm
 - ♦ Rollers: motorized on the front profile, auxiliary loading and unloading vehicle.
 - ♦ Two pairs of front and rear stops which can be operated manually or electro - Tires
 - ♦ Surface finish: hot dip galvanizing or powder coating
- Perimeter security active against accidental crushing

On request: Printer connected to the terminal for receipt printing



CONVEYOR FOR CONTAINERS



Major features

Conveyor with motorized rollers specially designed for the transport of air-container.

Bearing frame made of folded sheet metal with a thickness of 5mm, suitably shaped to give the maximum rigidity to the structure.

Technical Data

Standard model:

- ♦ **Width:** 2550 mm
- ♦ **Height:** 480 mm
- ♦ **Length:** 5000 mm
- ♦ **Ø rollers:** 80 mm
- ♦ **Capacity:** 3000 kg
- ♦ Rubber head rollers
- ♦ **Standard color:** : Red RAL 3003, Blue RAL 5022, White RAL 7030
- ♦ **Electrical gear** - stop with the possibility of inserting photocells

TRASPORTATORE

ROLLER SLIDES/CHUTES

SLR-10-00

Major features

Bearing frame made with profiles of electrowelded steel.

Support stands in welded tubular with adjustable levelling feet.

Sorting surface with rollers Ø50 galvanised placed in modular frames in perforated sheet.

Rollers distances: 78/104/156 mm.

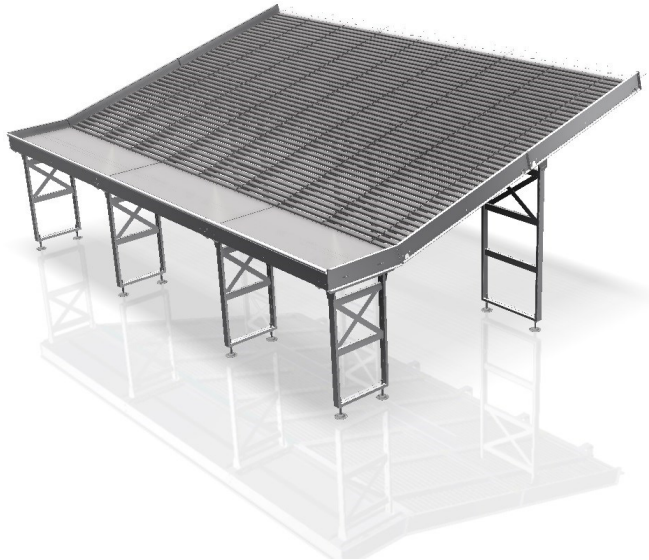
Modular structure and integrable in phases of enlargement.

Final stretch in modular plan realized by boards made of galvanized iron sheet.

Painted with epoxy powder after phosphating. Standard RAL 9006 - RAL on request with extra charge on.

Sliding surface made of galvanized iron sheet.

Ambient Temperature : from -5°C to +40°C

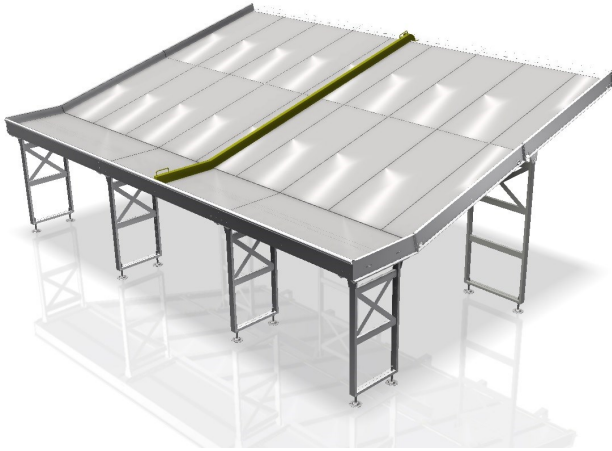


Dati tecnici

- ◆ Capacity: 0 – 120Kg/mq
- ◆ Final part in horizontal : L 800 mm
- ◆ Maximum Inclination 25°
- ◆ External width in plan W: According to the available light
- ◆ Length : modular according to the available space
- ◆ Standard starting Height: 2500mm
- ◆ Standard finishing Height: 1300mm
- ◆ Overall plan dimensions W for standard sizes: 4500 mm

TWO WAYS SLIDES/CHUTES

SL-10-00



Major Features

Bearing frame made with profiles of electrowelded steel.

Support stands in welded tubular with adjustable levelling feet.

Sorting surface in galvanized sheet metal with transverse reinforcement.

Modular structure and integrable in phases of enlargement.

Painted with epoxy powder after phosphating. Standard RAL 9006 - RAL on request with extra charge on.

The sliding surface in galvanized metal sheet
Ambient Temperature : from -35°C to +40°C.

Technical Data

- ◆ Portata: 0 – 150Kg/mq.
- ◆ Tratto finale in piano: L 800 mm
- ◆ Massima inclinazione: 25°
- ◆ Larghezza esterna in pianta W: Secondo la luce disponibile
- ◆ Lunghezza : modulare in funzione dello spazio a disposizione
- ◆ Altezza standard di partenza: 2500mm
- ◆ Altezza standard di arrivo: 1300mm
- ◆ Ingombro in pianta W per misure standard: 4500 mm

SCIVOLI



CONTACT US



REGISTERED OFFICE

Via Guglielmo Marconi 38
27010 Vellezzo Bellini (PV)
+39 0382 1571 022

www.mms-motion.com