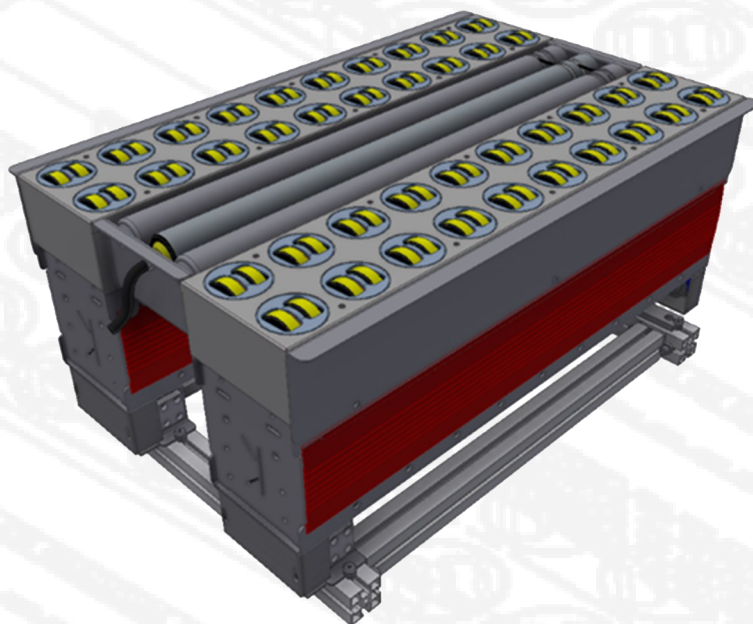




24 Volt



MODULAR SORTING TECHNOLOGY



K-Sorter, MMS's brand new wheel sorter, represents an accurate, fast and efficient sorting system, equipped with 24/400 volt motors and control boards.

K-Sorter can perform different functions, such as sorting, gapping, alignment and centering.

The patented wheels control system allows to have a solid, reliable and low-maintenance solution, besides being particularly safe and silent.

The rubber wheels are the result of our twenty-year experience, during which they have been used in challenging environments, such as express couriers and logistic companies.

Thanks to its modular structure, K-Sorter can be assembled in the required shape and size.

The module is placed on a support stand, specifically designed according to the application.



K-Sorter is available in different models, each of them being subdivided according to the number of wheels and voltage.

The configuration includes **K-Roller**, a module composed of three motorized rollers, powered by a 24 Volt motor.

The models are also subdivided according to the length of the rollers.

These two modules can be assembled to reach the required size, in order to be adaptable to the different applications.





Mechanical Information

- Rubber wheels ø 58 mm
- Wheels pitch: 78 mm
- Wheels coating: 70 SH rubber
- Standard length: 164mm
- Standard width: 471/627/783/939/1095mm
- Height: 287 mm
- 24/400 volt motors
- Rotation angle: $\pm 90^\circ$
- Roller diameter: 50 mm (K-Roller)
- Roller pitch: 52 mm (K-Roller)

Electronic Information

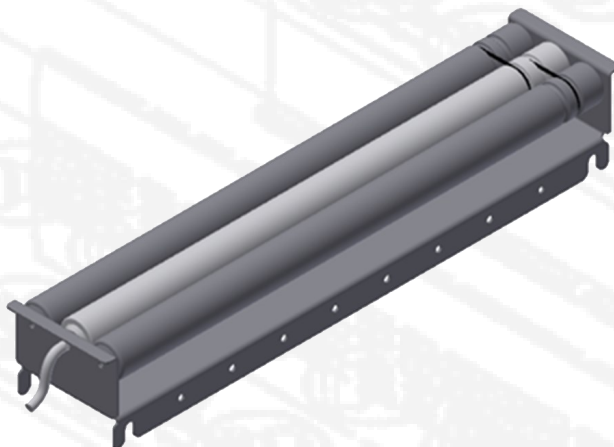
- Motor for rotation: 24 volt gear drive
- Max. rotation speed: 100 step/minute at 90°
- Motor for transport: 24 volt gear drive
- Max. speed: 1,5 mt/s
- N°1 homing sensor per motor
- Control board with Profinet connector
- Protection: IP-54
- Temperature: from 0° to 40°

Conveyable Objects

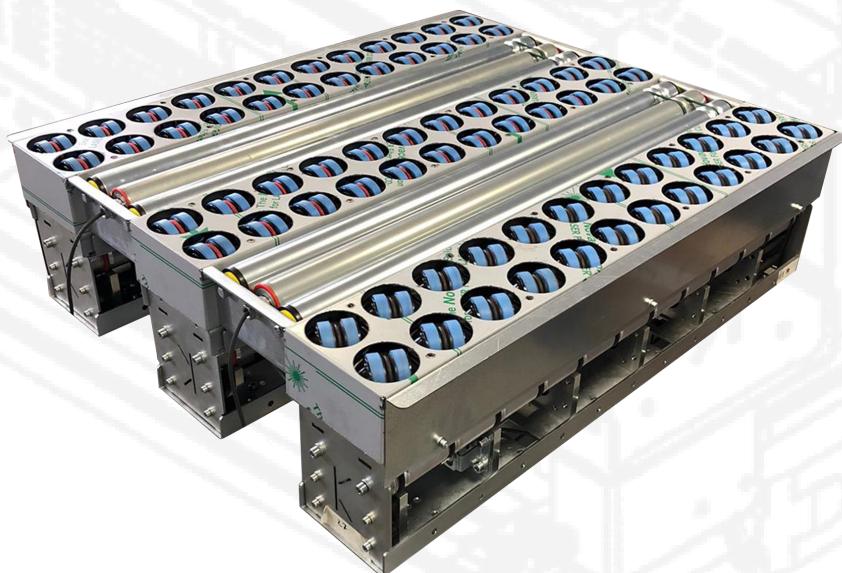
- Cardboard boxes, plastic containers, envelopes, bubble wrapped parcels.
- Sizes: Min. 150 x 100 x 5 mm
Max. 1200 x 800 x 800 mm
- Weight: Min. 50g
Max. 10kg per module
- Sorting capacity: up to 3.000 parcels per hour
(depending on the size and the gap of the parcels).



KR - Key Roller

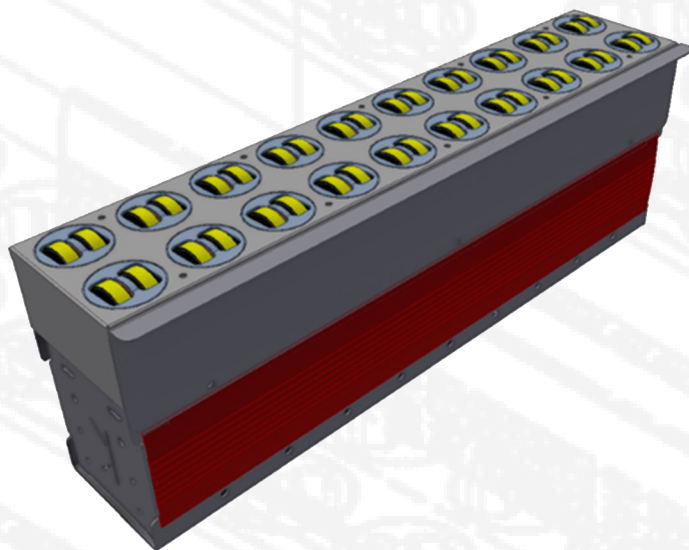


MODEL	LENGHT	ROLLER DIAMETER	TYPE
KR-A-24	471 mm	50 mm	Driveroller 24 Volt
KR-B-24	627 mm	50 mm	Driveroller 24 Volt
KR-C-24	783 mm	50 mm	Driveroller 24 Volt
KR-D-24	939 mm	50 mm	Driveroller 24 Volt
KR-E-24	1095 mm	50 mm	Driveroller 24 Volt



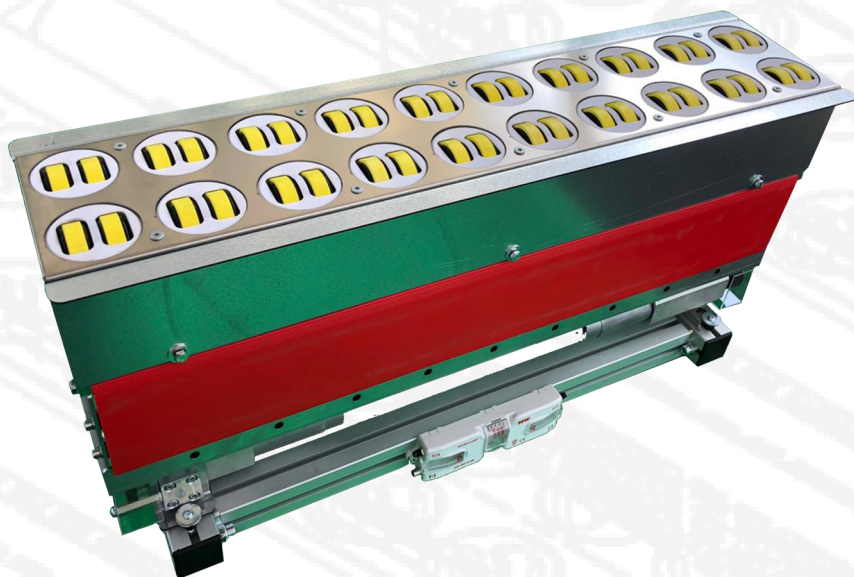


KS - Key Sorter



MODEL	LENGHT	WHEELS	MOTORS	ROTATION
KS-A-24	471 mm	12	1	1 Motor
KS-B-24	627 mm	16	1	1 Motor
KS-C-24	783 mm	20	2	1 Motor
KS-D-24	939 mm	24	2	1 Motor
KS-E-24	1095 mm	28	2	1 Motor
KS-D4-24	939 mm	24	2	2 Motors
KS-E4-24	1095 mm	28	2	2 Motors







Accessories



BELT CONVEYOR

- W: 400 - 500 - 700 - 800 - 1000 - 1200 mm
- L: 500 ÷ 1500 mm
- Motors: 24/48 volt



ROLLER CONVEYOR

- W: 400 - 500 - 700 - 800 - 1000 - 1200 mm
- L: 500 ÷ 1500 mm
- Motors: 24/48 volt



INFEEEDING

- Angle: 30°/45°
- W: 400 - 500 - 700 - 800 - 1000 - 1200 mm
- Motors: 24/48 volt



GRAVITY-BOTTOM TROLLEY

- Size: on request

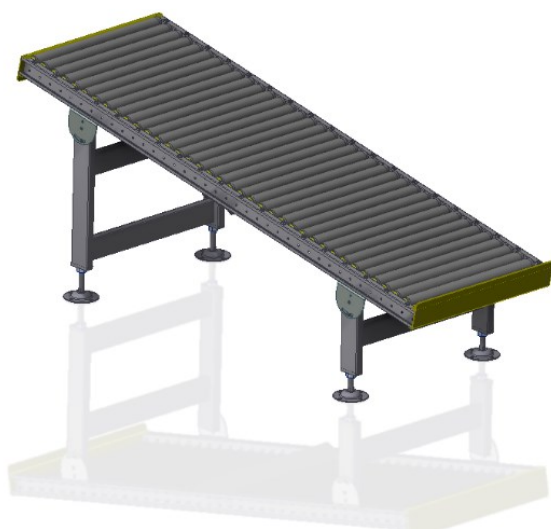


Accessories



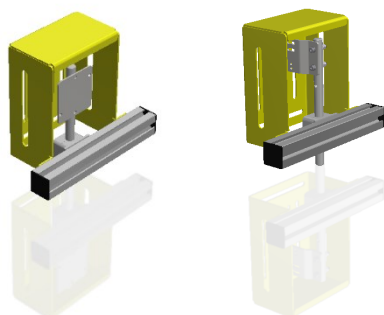
CONICAL ROLLER CURVE

- W: 400 - 500 - 700 - 800 - 1000 - 1200 mm
- Motors: 24/48 volt
- Angle: 30° - 45° - 60° - 90°

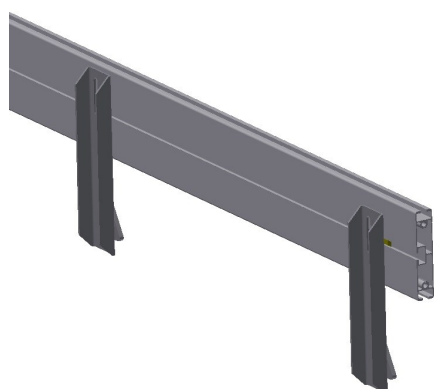


GRAVITY ROLLER CHUTE

- W: 500 - 700 - 800 - 1000 - 1200 mm
- L: 1000 ÷ 3000 mm
- Roller: gravity PVC roller ø 50 mm



PHOTOCELL SUPPORT



GUIDE SIDES

- Aluminium profile
- L: 500 ÷ 3000 mm

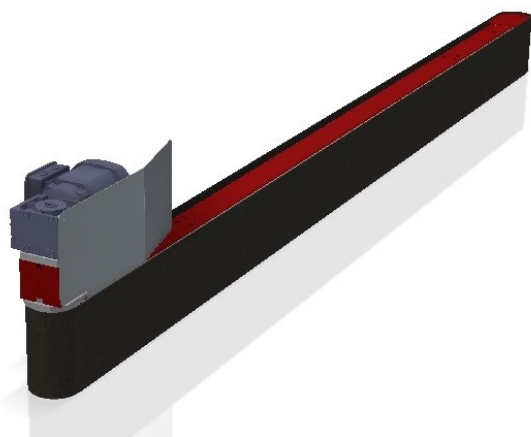


Accessories



OPERATOR'S WORKSTATION

- Details on request



MOTORIZED SIDE GUIDE

- L: 500 ÷ 2000 mm

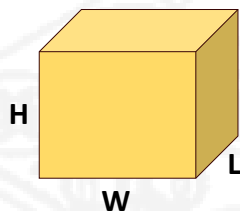


SUPPORT STANDS

- Painted steel structure
- W: 300 ÷ 1200 mm
- L: 500 ÷ 3000 mm
- H: on request



Basic Inquiry



PARCEL DIMENSION
Size: (Min./max.)
Weight: (Min./Max.)

PARCEL DESCRIPTION/PHOTO

Productivity: _____ Gap: _____ Centre to centre distance: _____ MATERIAL: <input type="checkbox"/> Cardboard <input type="checkbox"/> Plastic <input type="checkbox"/> Wood <input type="checkbox"/> Metal <input type="checkbox"/> Others

WAREHOUSE			
Humidity: _____ (Min./Max.) Power supply: _____ Temperature: _____ (Min./Max.) Comp. Air: _____ Floor: _____ Data line: _____		NOTE:	
Maintenance area: <input type="checkbox"/> Yes <input type="checkbox"/> No <input type="checkbox"/> Yes, outdoor	Loading/unloading equipment: <input type="checkbox"/> Yes <input type="checkbox"/> No <input type="checkbox"/> Yes, outdoor	NOTE:	CUSTOMER'S DATA: Customer: _____ Project: _____ Address: _____ E-mail: _____ Date: _____



MODULAR SORTING TECHNOLOGY



HEAD OFFICE

Via Marconi, 38 - 27010 - Vellezzo Bellini, Pavia - Italy

Phone: +39 0382 1571022

Email: sales@mms-srl.com

Web: www.mms-motion.com